



From the Rural Municipality of Lac du Bonnet

Lecoy House in Lac du Bonnet is 100 years old in 2007

by Gus Wruck

Inside this issue:

Scholarships Awarded	2
Showy Lady Slipper	2
How Your Tax Dollars are Being Spent	3
Governance vs. Management	4
Profile Don Halbert	4
Larvicide Program	5
Rural Crime Watch	6
Development Plan Review	7
Road Maintenance Plan	8

Isadore Lecoy (Isidore Lacaille in original French spelling) moved to the Lac du Bonnet area in the early 1900's with his wife, Isabelle. Mr. Lecoy originally came from Sault Saint Marie while his wife was from Fort Alexander. In July of 1907 he built a house at 26-15-11e in the future RM of Lac du Bonnet. He also built a stable, granary and fence on his property while farming full time.

In November of 1907, Mr. Lecoy made application for a homestead. In 1924 at the age of 80 years, he received title to his property under the Real Property Act. In 1929, the property was sold to Dr. Henry Bruce Chown. He used the property as a summer home for many years.

Many improvements were made over the years including a fireplace and a screened in porch which was later glassed in. Amenities such as electricity and indoor plumbing were also added over the years. A "carriage house" was built on the property that also included living quarters.

In 1981 the property was sold to Dennis and Pat Oscarson and their daughter. While they did not live in the house they were in the process of restoring it when it was designated as a municipal historic site in 1990. It is one of about 230 designated municipal heritage sites in Manitoba.

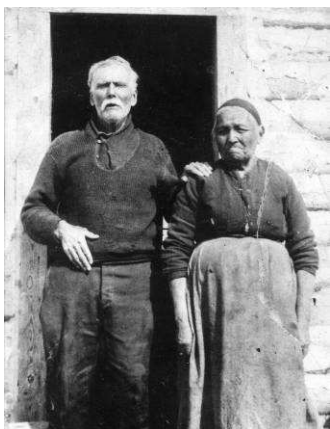
The current owners, Duane and Eileen Gelhorn continue to me-

ticulously care for the house to maintain and upgrade it structurally. The very few owners and their loving care for the house contributed to its survival in a largely intact condition to the present time.

The Lecoy House is the only example of early pioneer housing that still survives in Lac du Bonnet. The historical significance of this house is thus very important for the RM of Lac du Bonnet.

The Gelhorns would be willing to show their house to interested parties but they request that appointments be arranged through Councillor Gus Wruck at 345-2206.

- Special points of interest:
- Governance vs. Management explained
 - More pictures of Lecoy House inside
 - Budget Charts inside
 - Public Input Needed for Development Plan Review
 - Next Issue in Fall



Isadore Lecoy and his wife, Isabelle in front of their house



Lecoy house as it appeared about 20 years ago at the time of its designation as a municipal heritage site; see page 5 inside for more pictures.

Rural Municipality Awards Scholarships to Graduates

Every year the Rural Municipality of Lac du Bonnet awards scholarships to deserving high school graduates resident in the municipality. These scholarships are to assist the graduate to continue their education in post-secondary educational institutions. These scholarships are awarded on the basis of the student's academic achievement, involvement in community affairs and proof of acceptance in a university. This year on June 23rd, 2007, two graduates from the RM received scholarships under this program. Both recipients graduated from the Lac du Bonnet Senior

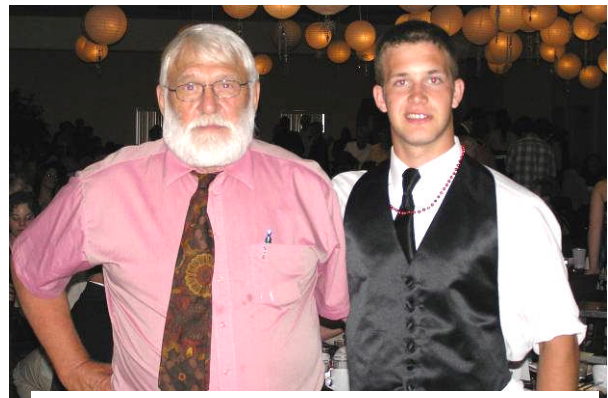
School.

Amy-Anne Smith from the Southwood Bay area was awarded \$1000 to go to the University of Manitoba. She has an impressive academic record and has been active in community affairs. She has work experience in numerous retail businesses in Lac du Bonnet, a member in the Canadian Armed Forces Reserves, involved in sports and was crowned Miss Minnewawa in 2006. In her spare time she likes to read and has published several articles and essays. Amy has plans to pursue a career in medicine.

Patrick Gary Rollins from the Riverland area was awarded \$500 to go to the University of Manitoba to pursue a career in business. Patrick was also on the Principals Honour Role as was Ms. Smith. Patrick was long been involved in his father's former business at the gas station as well as other businesses such as a roofing assistant. Patrick is with the Lac du Bonnet Fire Department and has volunteered for several other activities of public and community nature.



Amy-Anne Smith with Councillor Wruck



Patrick Gary Rollins with Councillor Wruck



Showy Lady slipper in Lac du Bonnet

Showy Lady Slipper

from Wikipedia

The **showy lady slipper** (*Cypripedium reginae*), also known as the **pink-and-white lady slipper** or the **queen's lady slipper**, is a rare orchid found in eastern North America. The plant became the state flower of Minnesota in 1902, and it is also very common in Manitoba. It is illegal to pick or uproot a showy lady slipper flower in Minnesota. This rare plant has vanished from much of its historical range due to habitat loss.

Found in damp woods, bogs, and swamps,

the orchid can take 16 years to grow and bloom for the first time. The plants can live for 50 years, and tend to flower in late June and early July. Usually, there are one or two flowers per stem, but there can be three or four. The stem has a hairy appearance, and the "hairs" can cause irritation to some people.

Although this plant was originally chosen as the provincial flower for Prince Edward Island in 1947, it was so rare on the island that another Lady's Slipper, *C. acaule* (moccasin flower or pink lady slipper), has replaced it as the province's floral emblem.

HOW ARE YOUR TAX DOLLARS BEING SPENT

by Don Halbert

Council and staff often hear complaints from ratepayers that they receive absolutely nothing for their tax dollars. While such comments are truly an exaggeration usually said in frustration, it raises a concern that many ratepayers do not understand how tax dollars are being spent.

It is anticipated that the Rural Municipality of Lac du Bonnet will collect approximately \$6.3 million in revenue in 2007. However, property owners must understand that nearly 56 percent of the monies collected by the municipality or approximately \$3.6 million will be paid directly to Sunrise School Division and the Province of Manitoba to support education in our region. This leaves a balance of approximately \$2.77 million for the municipality to deliver services to its ratepayers.

While a small percentage of these dollars are placed in reserve funds under fiscal services to meet future financial requirements along with administrative expenses, the bulk of the municipality's financial resources are used to deliver a

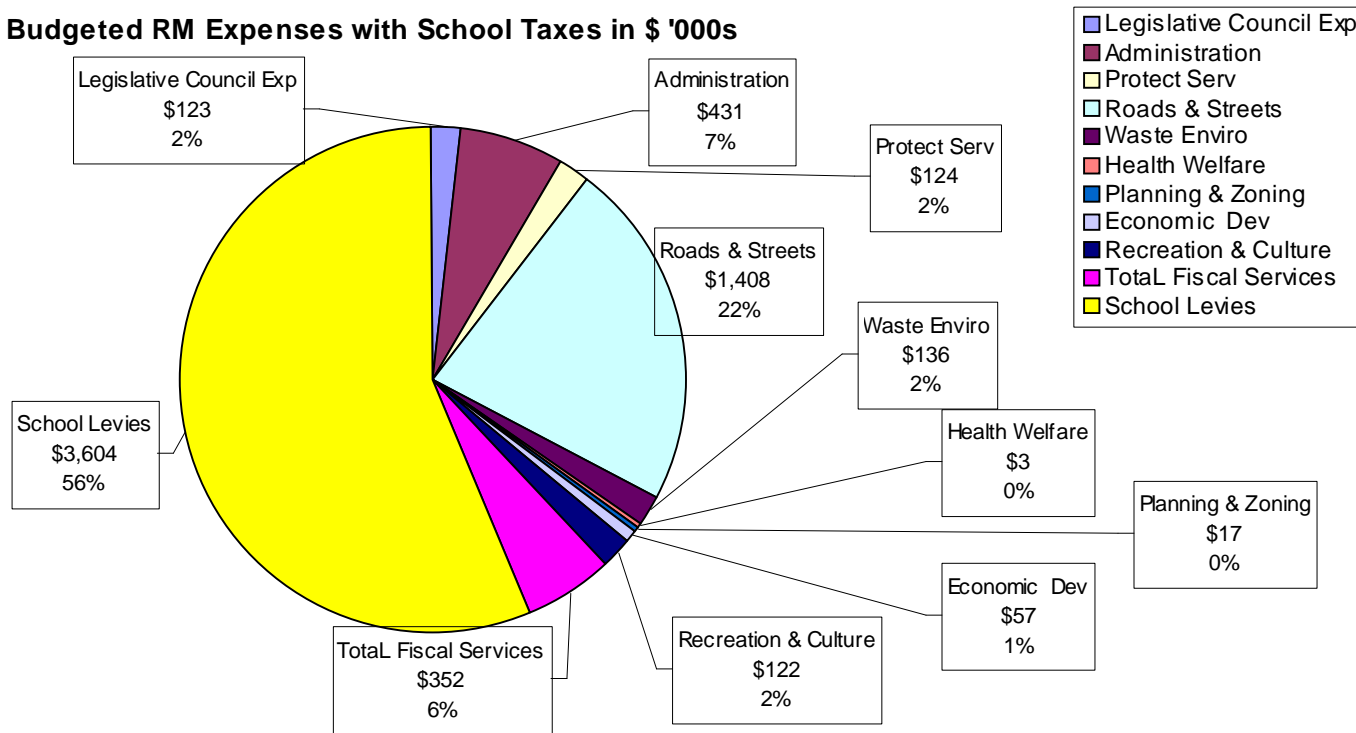
multitude of services to its constituents.

The following is a summary of the services that are delivered through the expenditure of municipal tax dollars:

- 490 kilometres of municipal roads, all of which are maintained on a year-round basis;
- summer maintenance of public reserves;
- administration and operation of a district volunteer fire department;
- a complete civic addressing system;
- enhanced 911 Emergency Response System for every phone line;
- Emergency Coordinator with an emergency plan in place;
- By-Law Enforcement Officer;
- operation of two waste disposal transfer stations (five-bin site on Provincial Road 313 and a two-bin site on Provincial Road 214);
- support towards a municipal recycling program;
- two-cell sewage lagoon, with each cell encompassing 114,000 sq. meters, which is capable of servicing 4,568 permanent residents;
- administration and maintenance of a Regional Airport, that includes a paved runway and water base;
- ongoing drainage projects along 1,377 kilometres of municipal drains;
- financial support towards the Lac du Bonnet Regional Library; Lac du Bonnet Arena; Lac du Bonnet Youth and Community Centers; Lac du Bonnet/Pinawa Recreation District; Municipal Heritage Advisory Committee; Lac du Bonnet Planning District; and Agassiz Weed District;
- maintenance of five municipal boat launches, numerous parks and eight municipal cemeteries.

In addition to the preceding services, the Rural Municipality also provides financial support to numerous community-based and regional organizations in support of their programs and activities.

Budgeted RM Expenses with School Taxes in \$ '000s



GOVERNANCE VERSUS MANAGEMENT

by Don Halbert

Under the Manitoba Municipal Act, the role of any Council is to provide “good government”. However, the term, “good government” can connote many things to different people. As such, the public often confuses governance with management.

Contrary to the views of many, Council does not exist to manage the day-to-day affairs of the municipality. That responsibility rests with the management and staff of the municipal government.

While Council is concerned with and oversees the ongoing operations of the jurisdiction, its role in terms of “governance” is to set policy and direction. This is primarily accomplished through the strategic, operational and financial planning processes. As well, it is up to Council to clearly define roles and responsibilities for management positions, in addition to setting the policy framework by which the municipality operates.

In as much as Council members are concerned with the delivery of effective and efficient services within the R.M. of Lac du Bonnet, delivery of those services are the responsibility of municipal personnel. Although any member of Council is pleased to hear from ratepayers concerning service delivery concerns, one member of Council is not in a position to provide individual direction to municipal employees.

Council does not exist to manage the day-to-day affairs of the municipality.

All decisions emanating from Council must be made by Council collectively. As individual members, the Reeve and Councillors have absolutely no power. The power exercised by Council can only

be used when Council is duly assembled, a record keeper is present (usually the CAO) and written resolutions are subsequently passed.

Individual Council members are an important link between ratepayers and staff. Nevertheless, direction can only be given, personnel and equipment time committed and money spent when Council is assembled together.

Don Halbert, Reeve , Rural Municipality of Lac du Bonnet

from Russ Preston



Reeve Don Halbert

As a way to know your municipal council members better we will be doing a series of short biographical summaries on the reeve and each councillor in each issue of the News and Views from the RM of Lac du Bonnet. We will start with the Reeve and continue with others in subsequent issues.

Don Halbert is a native Manitoban, born and raised in Winnipeg. Don and his wife, Carolyn have owned property in the Rural Municipality of Lac du Bonnet since 1979, choosing to make the municipality their home in 1992.

Don’s background is in the field of communications, marketing and public sector management. Prior to establishing a couple of home-based businesses in Lac du Bonnet, Don spent 20 years working in the public sector. Thirteen of those years were spent in a variety of capacities with Manitoba Highways and Transportation, Division of Driver and Vehicle Licensing. The last seven years of his public sector career were spent with Manitoba Public Insurance, where Don managed the corporation’s Traffic Safety and Loss Prevention Department.

Don was first elected as a Councillor in 1998. He was subsequently elected Reeve in 2002 and acclaimed to the position in 2006. Reeve Halbert is committed to seeing the municipality operate on sound business and management principles, while ensuring that the best possible services are delivered to ratepayers at the most reasonable cost.

COUNCIL SEEKS LARVICIDE PROGRAM AGAINST WEST NILE VIRUS

by Don Halbert

Eastern Manitoba received an inordinate amount of rain this spring and early summer. Since mid-May, records show that our region had in excess of 17 inches of rainfall. This figure may vary somewhat depending upon the area of the municipality in which you live.

In addition to causing flooding which impacted roads, businesses and agricultural production, standing water in ditches and other low-lying areas bring about the potential threat of West Nile Virus, which is transmitted by the Culex tarsalis mosquito.

The larvicide program shall take place in all major developments of the municipality containing standing water.

Following the major downpour of May 28th, Council directed staff to file an application with Manitoba Health to approve a larvicide program within the Rural Municipality of Lac du Bonnet. Following ongoing monitoring of standing water

within the municipality, which proved positive for the Culex tarsalis larvae, the R.M.'s application was approved.

The larvicide program will be administered by the Agassiz Weed District and is cost-shared by the province and the municipality on a 75/25 percent basis. The cost to the rural municipality shall just be in excess of \$3,000.00.

The larvicide program shall take place in all major developments of the municipality containing standing water. Developments containing a large amount of natural rock formations will not be part of the program. According to West Nile experts, areas containing large amounts of natural rock are not ideal breeding conditions for the Culex tarsalis mosquito.



Culex tarsalis mosquito; carrier of the West Nile virus



Interior of Lecoy house on main floor showing the log ceiling preservation by the present occupants. Picture on right is before restoration.

Does your Resident's Association Need a Rural Crime Watch Program? *from Karen Weir*

While criminal activity such as break and enter, theft, vandalism, trespassing is low in the Lac du Bonnet; they are serious concerns for all rural communities. Your farm, home, cottage is one of your largest investments and should be protected. Crime affects everyone not just the victim of crime. We are all affected with higher insurance premiums, replacement or repair of our property when crime occurs.

There are about 25 Rural Crime Watch programs operating in the eastern Manitoba area. The basic activity of Rural Crime Watch is crime prevention. Rural Crime Watch is a local community based effort focusing on reducing crime in your area. It is based on the idea that crime is least likely to occur when people are aware, willing to look out for each other and work closely with police.

A Rural Crime Watch Program allows residents to become the eyes and ears for the police. Perpetrators of crime are far

less likely to commit crime if they believe someone may be watching their activities. Crime prevention is especially important in cottage areas since many residences are unoccupied for long periods.

Neighbours are expected to become curious about what is going on in their area including your neighbour's property. Unusual activities are reported to the local Crime Watch Captain or the RCMP. At no

It is too late to prevent crime after it happens.

time are local residents or the Crime Watch Captain expected to confront someone if there are suspicious people present or a crime being committed. Depending on the circumstances the RCMP are able to respond in as short a time as 10 - 20 to minutes in an emergency but it would be longer under non-emergency conditions.

A Crime Watch Captain is required as an unpaid volunteer to represent and coordinate the Crime Watch Program in the

community area and to act as a liaison with the RCMP. Each association area needs a Crime Watch captain to work with the RCMP keep the appropriate signs available for individual property owners.

The rural emergency numbering system can be very helpful in finding residences during an emergency. Also a roster of all residents can be useful as well.

The RCMP has indicated that there is a large highway sign that can be erected at the entrances to a subdivision. There are also smaller signs that residents can use at road entrances and at water entrances to each property. These signs are available from the RCMP or your Crime Watch Captain in areas that have organized Crime Watch programs.

Any resident's association that would like to start a crime watch program in their area is welcome to contact Mr. Ken MacMaster at 345-2925. He will then advise you on the appropriate steps to take.



Left; Crime Watch sign at the entrance to a subdivision
Middle; Crime Watch sign at property entrance from a road
Right; Crime Watch sign on a boat house

DEVELOPMENT PLAN UNDER REVIEW

by Don Halbert

Land use policy within the Rural Municipality of Lac du Bonnet and the Town of Lac du Bonnet is established by the Lac du Bonnet Planning District. The Planning District Board is comprised of five members; two from the Town of Lac du Bonnet and three from the Rural Municipality.

All decisions regarding land use set by the Planning District Board must conform to the district's Development Plan, which is a large, broad policy document outlining the rules for land use in the two jurisdictions. Development Plans, while unique to each Planning District, are subject to

review and approval by the Provincial Minister of Inter-Governmental Affairs.

It is imperative that Development Plans be reviewed on a periodic and ongoing basis and the Lac du Bonnet Planning District is currently involved in this very important exercise. Since the Development Plan review process is a lengthy and arduous task, the Lac du Bonnet Planning District has commissioned the firm of Scatliff, Miller and Murray to oversee this task.

Obviously, public input is a very large component of this exercise. To this end, a number of sessions will be held where various segments of the community will have an opportunity share their views. Areas of the community whose comments are valuable to this process include:

- Agriculture;
- Agriculture (livestock);
- Developers/Builders;

- Business;
 - Real Estate;
 - Recreation (motorized);
 - Recreation (non-motorized);
 - Service Provider;
 - Residents (Town and R.M);
 - Cottager (permanent and seasonal).
- Anyone wishing to have their say as part of the Development Plan Review Process is invited to contact:

Mr. Derek Eno, MCIP
 Scatliff, Miller & Murray
 8-44 Princess Street
 Winnipeg, Manitoba
 R3K 1B2
 Telephone: (204) 927-3444
 E-mail: deno@scatliff.mb.ca

Public input is a very large component of this exercise...

Anyone wishing to have their say ... is invited to contact: Mr. Eno



An example of planning with designated areas in and around Lac du Bonnet each with a specific purpose. Agricultural areas, commercial, community and residential are separated.

RM of Lac du Bonnet
Box 100
Lac du Bonnet MB R0E 1A0

Phone: 204-345-2619
Fax: 204-345-6716
E-mail: rmldb@mts.net



RM of Lac du Bonnet

A Four Season Playground

You can receive this publication by email if you send an email to: rmldb@mts.net to be put onto the list.

We're on the web see:
lacdubonnet.com

Municipal Road Maintenance Plan

By Bob Bruneau

Municipal roads are graded in four stages. The first stage of grading begins in late spring or early summer after the frost boils dry up, and the center of the roads are firm enough to support the weight of the graders without creating ruts. The operator moves material across the road in two or three passes without disturbing the shoulders of the road which are still too wet. This light grading repairs washboard and pot holes and also promotes drying.

The second stage of grading is performed when the shoulders are dryer and harder. The road is shaped by pulling material from the shoulders, mixing it in with the dryer material.

The material may have to be worked across the road several times to break up the wet lumps from the shoulders. At the completion of the second stage grading, gravel will be spread on the road where required.

The third stage grading is more of a maintenance period. Deeper grading may be required in areas to remove potholes and washboard. The entire width of the road is graded and a 4% crown is established or maintained. At the completion of the third stage grading, when the roads are shaped properly and crowned, dust control may be applied where required. Later, if pot holes or washboard appear where dust control was applied, some grading may have to occur.

Grading is best performed when the road is wet or the dust control protection could be lost.

The fourth stage grading is done later in the fall, less material is loosened. The operator pulls loose gravel from the shoulders and feathers it across the driving surface. This grading will lessen the amount of gravel lost during snow ploughing operations.

This year excessive rain and wet roads delayed the second stage grading until the second week of July. This delayed the graveling plans by Public Works. They cannot run heavy gravel trucks on municipal roads, when the roads are too wet and soft, without doing more damage to the roads.

Some graveling occurred on roads to repair major problem areas caused by contractors and farm trucks hauling material over municipal roads in an effort to avoid the provincial highways. The province restricts heavy traffic on some of their highways from the beginning of May until the end of June.

Because the second stage grading was delayed, the third stage grading and dust control was also set back. Plans were made to begin a major graveling haul on Monday July 23 and major gravel hauling has been under way with the generally dry weather. In a normal year the roads are gravelled, shaped and ready for dust control by the end of June.



Grader Operating on a Municipal Road